

gCMOB-HD User Manual



Main Functions:

- Device Manager
- Real-time Monitor
- PTZ Control
- Real-time Snap
- Audio Talk
- Channel Favorites
- Playback
- Alarm Push
- Channel Config
- Local Config

Boot up:

- After applications booted up, it goes to the real-time monitor interface by default.



Device Manager:

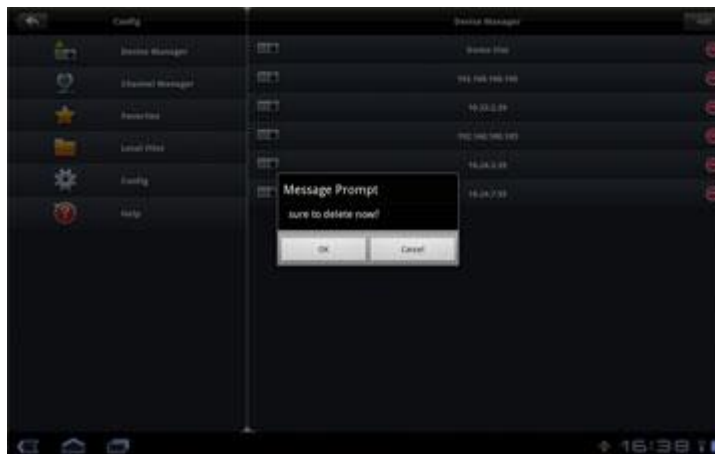
- Click  you can see system navigation tool bar . There are three buttons: real-time monitor, playback, system config.
Click , you can go to system configuration interface.



- System goes to the device manager interface by default. Click the Add button, you can go to the following interface. Please input the device name, IP address, port, user name, password and etc. The channel amount can remain the default value, or you can input the actual channel number. The value here can automatically refresh in the following operations such as monitor, playback, and configuration.



- Click the Save button, system goes back to the Device manager interface. You can click the red button of the corresponding device to remove it.



- If you want to change device name, IP address, port, user name, password and etc, please select the device and then go to the device edit interface to modify.



Real-time Monitor:

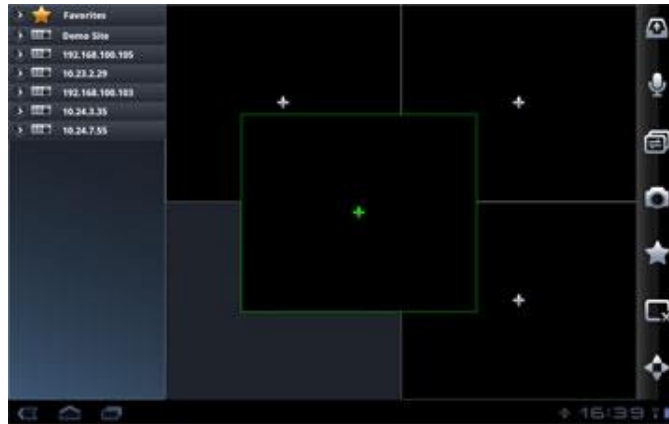
- The real-time monitor interface includes functions such as monitor, audio talk, snap and etc.
- There are two ways for you to open the real-time monitor window. The first one is to click the cross icon on the playback window. You can see system pops up a device list. Please select one channel to play.



- You can select one or more channels from the list and drag to the specified window to play. You can also drag one favorites group or one device to play.




- The window can be drag around as you wish, Click  the window split will change with 4、6、9、16.



PTZ Control:

- In portrait mode, the PTZ control is on the next page of the control window.














- In the landscape mode, you can click button  to view the PTZ control.




- When the playback window is in full-screen mode, you can use your hand gesture to realize PTZ or EPTZ operation.

Please refer to the following contents for buttons information:

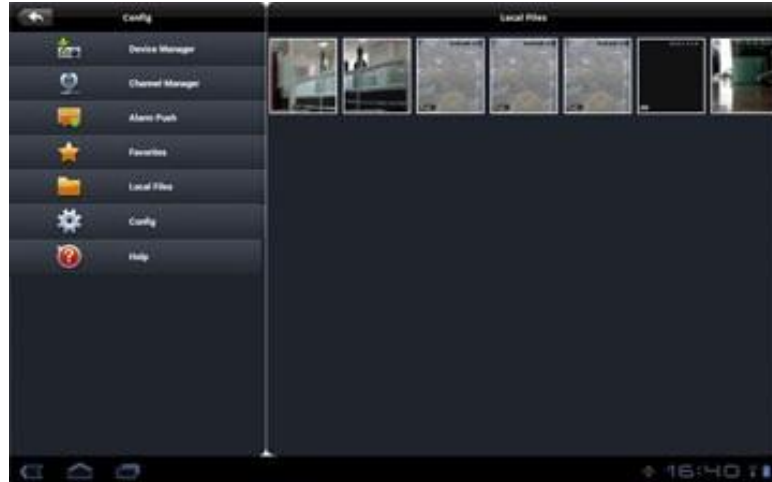
-  : Move up
-  : Move down
-  : Move left
-  : Move right
-  : Zoom in
-  : Zoom out
-  : Focus+
-  : Focus-
-  : Aperture+
-  : Aperture -
-  : Preset

Real-time Snap:

- During the monitor or the playback process, you can click the button  on the tool bar to snap. The picture is saved in the system album.

Local Files:

- In the Config interface, choose Local Files to list the snapshot you saved.



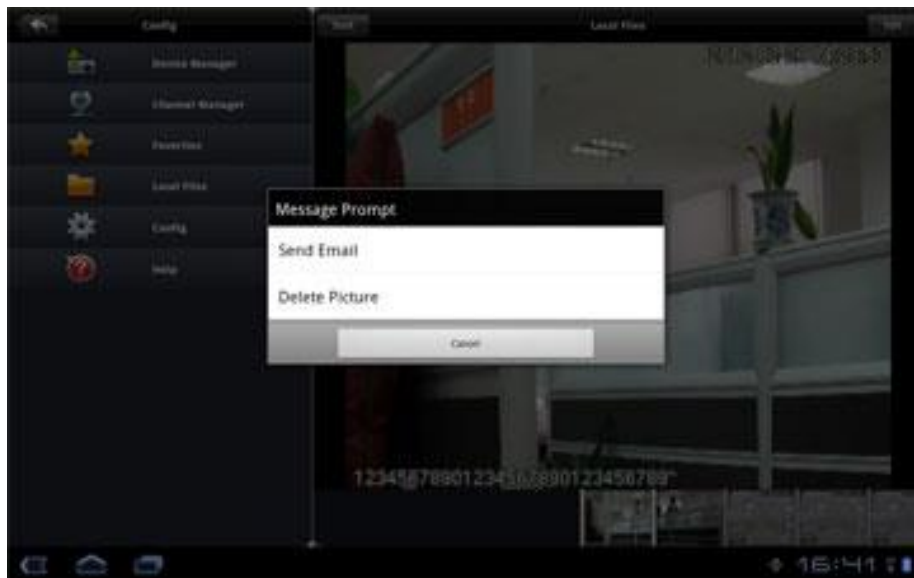
- Click the picture, enter the preview interface





- You can delete or mail the snapshot. Two ways to do that.
 - Hold press the picture, config interface will pop up.

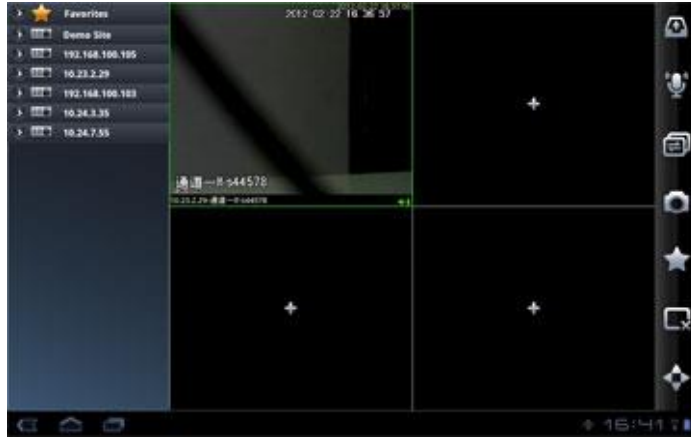




- Just press the Edit button, to see the config interface



Audio Talk:

- When the current window is playing, you can click button  on the tool bar to realize the bidirectional talk. You can view an icon  on the interface if the audio talk is successfully enabled.





- Press button  for a long time, system pops up the device list. You can select a device to begin audio talk. Please note, system supports one device audio talk only. The audio talk icon becomes as  after the audio talk is successfully enabled.



Channel Favorites:

- There are two channel favorites' modes. The first one is for you to go to the Favorites to save just one channel.

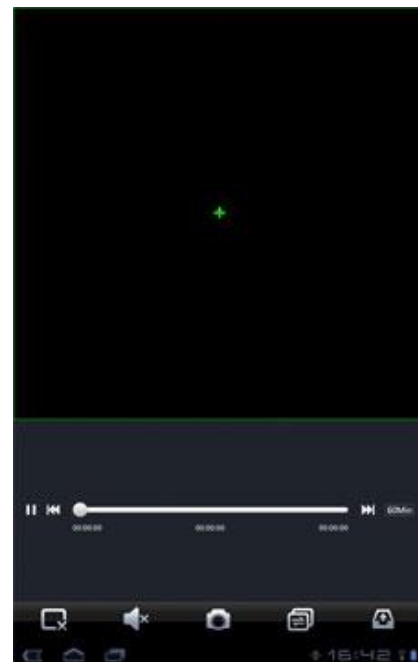
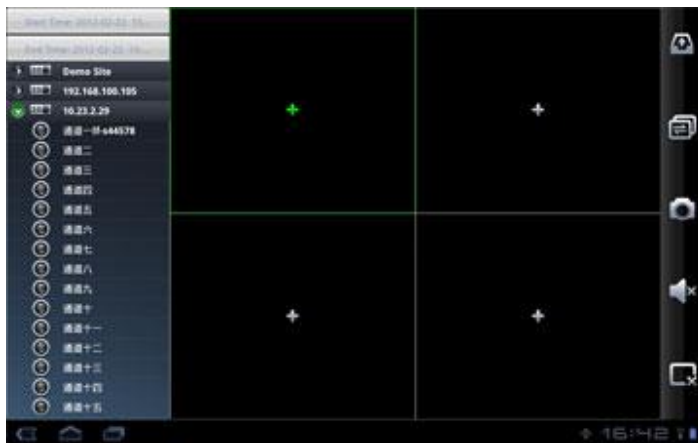


The other way is that you can click the button  to save the Favorites group during the monitor process. After you successfully saved the favorites, you can use the button  at the bottom of the play window to realize the group play when you are monitoring.



Playback:

- You can go to the playback window via the navigation tool bar. The playback interface is similar to the monitor window. Here you can set record start time, end time, device channel and etc. You can search and play the record.



- The playback process bar includes 60m/30m/5m options.

Alarm Push:

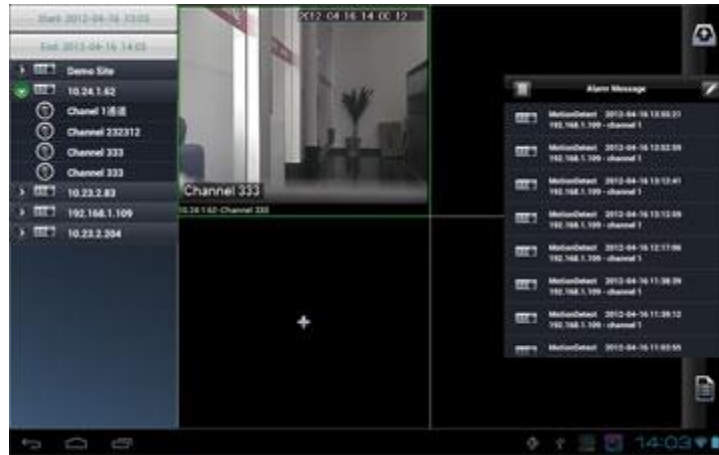
- You need to go to the configuration interface to subscribe the alarm push function. You can click the Switch button on the right of the device name to subscribe or cancel the subscription.



- You need to click the device to go to the alarm configuration interface to set the detailed subscription contents such as channel, and alarm type.



- Click Display button, you can view the playback video before and after the alarm occurrence time.



Local Config:

- You can go to the local configuration interface to set PTZ speed, password protection and etc.





Website: - www.cpplusworld.com
Email id: - sales@cpplusworld.com; support@cpplusworld.com
